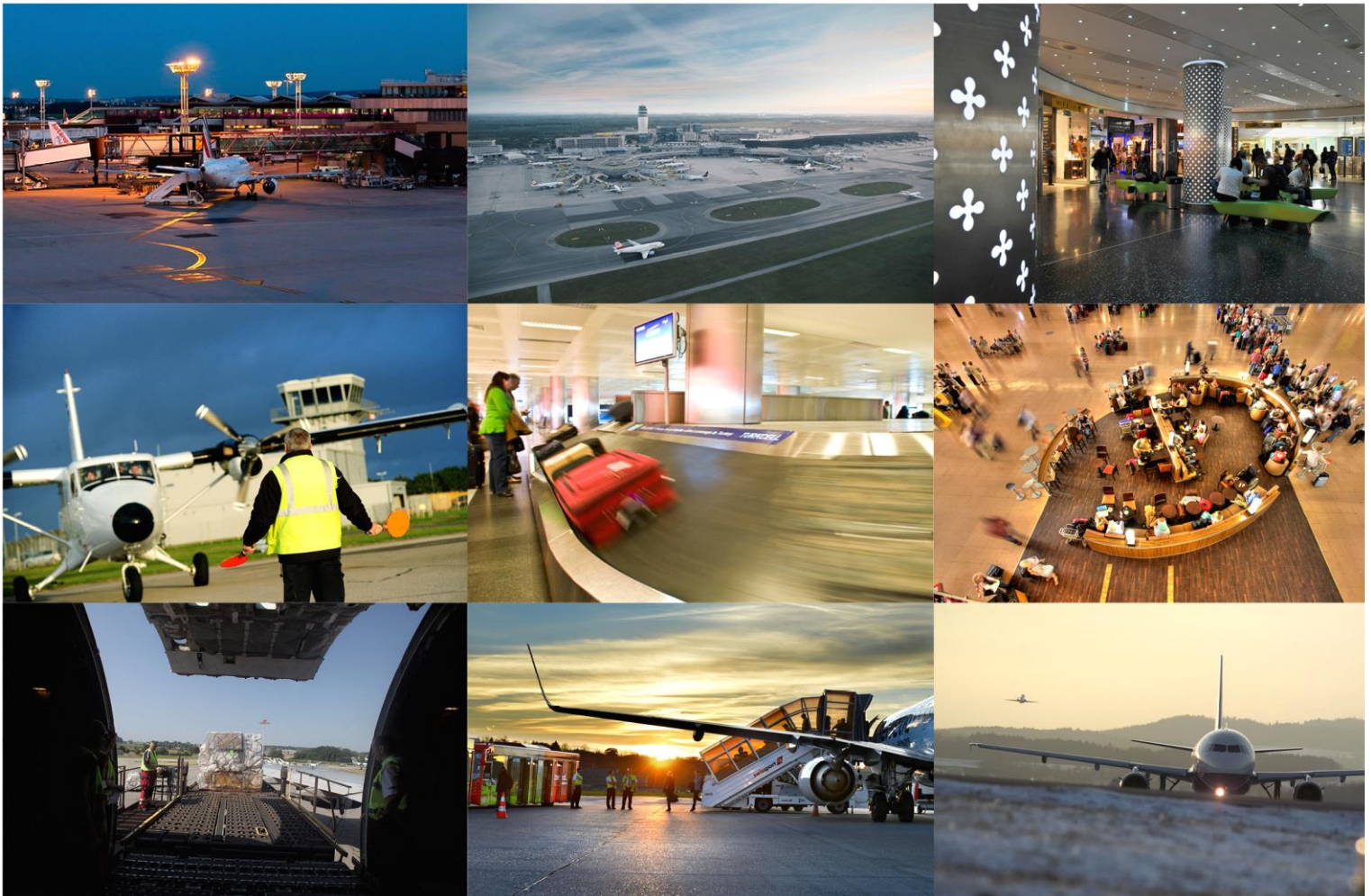




ACI EUROPE AIRPORT TRAFFIC REPORT

SOURCE: ACI WORLD & ACI EUROPE

February 2019



February passenger traffic up 5%, but freight traffic keeps decreasing

Brussels, 9 April 2019: European airport trade association, ACI EUROPE today releases its traffic report for **February 2019**, during which average **passenger traffic** in geographical Europe grew by **+5%** compared with the same month last year – an improvement over the performance registered in January (+4.2%). Conversely, February marked the 4th consecutive monthly decrease in **freight traffic**, which further worsened to **-3.3%**.

Olivier Jankovec, Director General of ACI EUROPE commented “*Even though passenger traffic growth has somehow moderated compared to last year, it remains dynamic and keeps defying weakening economic trends as well as significant geopolitical risks – for now. The performance gap with freight traffic is impressive, especially in the EU market. This is not going to last forever. By all odds, passenger traffic growth is set to decelerate in the coming months.*”

EU AIRPORTS LEADING PASSENGER GROWTH

The **EU market** led the passenger growth dynamic, with airports throughout the bloc posting an average increase of **+5.5%**. Double-digit growth was achieved by airports in Austria, Croatia, Estonia, Greece, Luxembourg, Poland and Slovakia – while airports in Cyprus, France, Ireland, Italy, Spain and most of the Eastern part of the bloc also grew above the EU average.

Meanwhile airports in Denmark, Finland, Malta, the Netherlands and the UK generally grew below the EU average, while those in Belgium saw their gains wiped out by an ATC strike on 13 February that completely shut down the country’s airspace. Airports in Sweden were the only ones losing passenger traffic (-3.4%) - a trend which followed the introduction of an aviation tax last year and also reflects changing attitudes towards air transport in the country.

The following larger & capital airports in the EU registered the best performances: Berlin-Tegel (+32.6%), Vienna (+25.6%), Palma de Mallorca (+14.6%), Tallinn (+13.9%), London-Luton (+13.2%), Dusseldorf (+12%), Athens (+11.4%), Bratislava (+11.4%), Edinburgh (+11%), Milan-Malpensa (+10.7%), Bucharest (+10.4%), Warsaw-Chopin (+10.2%), Dublin (+8.6%) and London-Stansted (+8.2%).

Airports in the **non-EU market** saw passenger traffic increasing by just **+3.3%**, mainly as a result of decreasing traffic volumes in Turkey (-2.1%) and Iceland (-6.5%). However, airports in Albania, Belarus, Georgia, Macedonia and Ukraine registered double digit-growth, while growth was also very dynamic at Russian airports.

Accordingly, the best results amongst non-EU larger & capital airports came from Moscow-Sheremetyevo (+18.6%), Kiev (+16.3%), Minsk (+16.2%), Antalya (+15.6%), Tirana (+14%), Saint Petersburg (+13.5%), Tbilisi (+13.1%) and Pristina (+11.9%).

The Majors (top 5 European airports) registered passenger growth of **+2.8%** - an improvement compared to January (+1.3%) mainly driven by the performance of Paris-CDG (+7.1%) and Frankfurt (+4.3%) as well as lower traffic losses at Istanbul-Ataturk (-0.8% compared to -2.6% in January). Capacity constraints kept limiting growth at Amsterdam-Schiphol (+2.0%) and London-Heathrow (+1.6%).

FREIGHT NEGATIVE BOTH IN THE EU & NON-EU MARKETS

While **freight traffic** at **EU airports** kept falling with a decrease of **-3.7%** in February, it also turned negative at **non-EU ones** at **-1.2%**. Amongst the top 10 European airports for freight traffic only 3 posted gains: Liège (+9.3%), Madrid (+6.8%) and Istanbul-Ataturk (+2.3%).

Aircraft movements were up **+3.5%** - increasing by +3.9% in the EU market and by +2.1% in the non-EU bloc.

During the month of **February**, airports welcoming more than 25 million passengers per year (Group 1), airports welcoming between 10 and 25 million passengers (Group 2), airports welcoming between 5 and 10 million passengers (Group 3) and airports welcoming less than 5 million passengers per year (Group 4) reported an average adjustment **+4.6%**, **+6.4%**, **+4.6%** and **+3.7%**.

The airports that reported the highest increases in passenger traffic during February 2019 (compared with February 2018) are as follows:

GROUP 1: Vienna (**+25.6%**), Moscow SVO (**+18.6%**), Antalya (**+15.6%**), Palma de Mallorca (**+14.6%**) and Dublin (**+8.6%**)

GROUP 2: Berlin TXL (**+32.6%**), Kiev (**+16.3%**), St Petersburg (**+13.5%**), London LTN (**+13.2%**) and Dusseldorf (**+12%**)

GROUP 3: Thessaloniki (**+24.4%**), Seville (**+20.4%**), Nantes (**+19.2%**), Faro (**+16.6%**) and Krakow (**+14.8%**)

GROUP 4: Kutaisi (**+111.3%**), Batumi (**+87.3%**), Mostar (**+71.9%**), Bucharest BBU (**+66.3%**) and Caen (**+64.4%**)

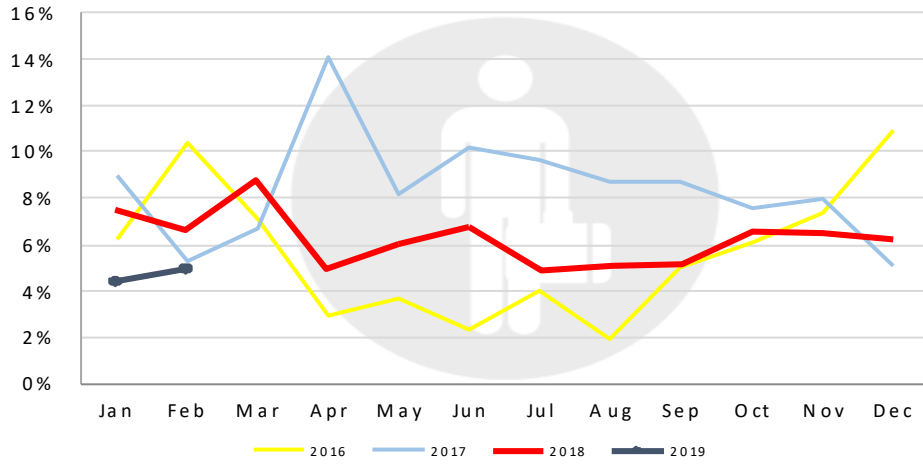
The '**ACI EUROPE Airport Traffic Report – February 2019** includes 248 airports in total representing more than 88% of European air passenger traffic.

ACI EUROPE Airport Traffic Reports are unique in that they are the only ones to include all types of airline passenger flights to, from and within Europe: full service, low cost, charter and others.

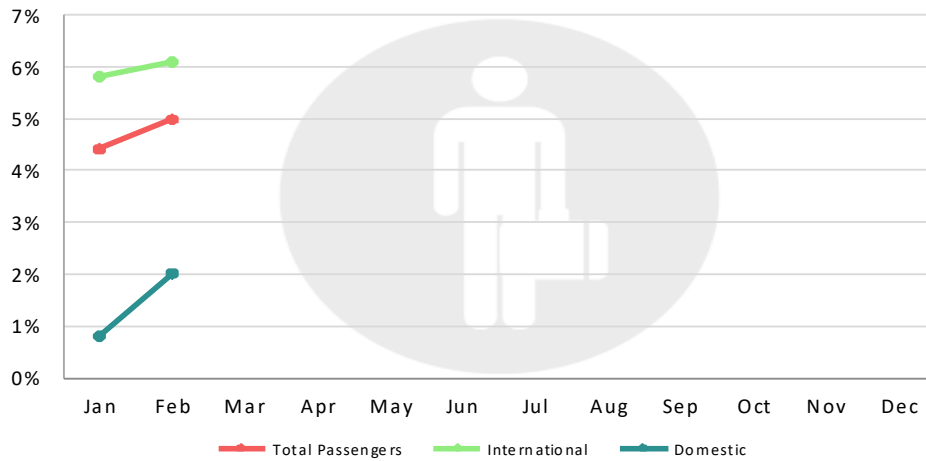
EXECUTIVE SUMMARY (February 2019)

	February 2019/2018	YTD 2019
Total Passengers	5.0%	4.7%
EU airports	5.5%	5.3%
Non-EU airports	3.3%	2.9%
Passengers International	6.1%	6.0%
EU airports	5.7%	5.7%
Non-EU airports	7.6%	7.3%
Passengers Domestic	2.0%	1.3%
EU airports	4.6%	3.8%
Non-EU airports	-1.9%	-2.3%
Freight	-3.3%	-2.7%
EU airports	-3.7%	-3.3%
Non-EU airports	-1.2%	0.3%
Movements	3.5%	3.7%
EU airports	3.9%	4.1%
Non-EU airports	2.1%	2.5%
PAX + Freight Combined	3.6%	3.9%
Cargo only	-1.4%	-1.7%

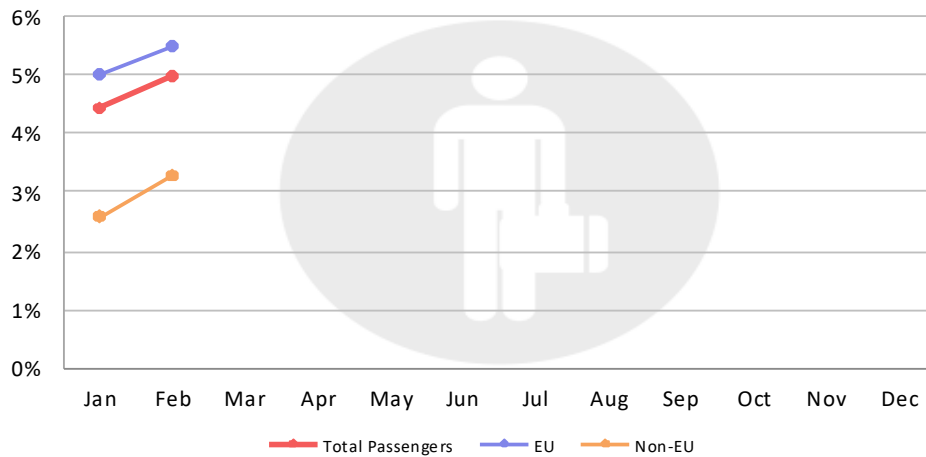
TOTAL PASSENGER DEVELOPMENT (Year-on-year changes)



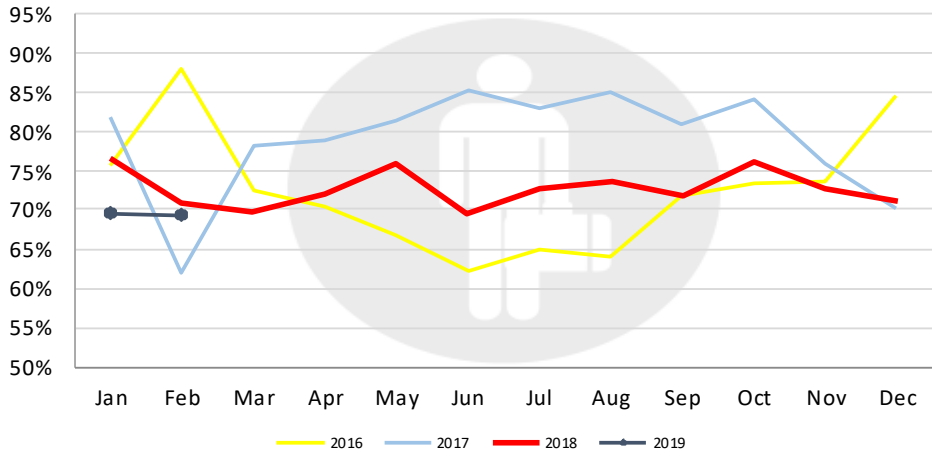
INTERNATIONAL & DOMESTIC PASSENGERS



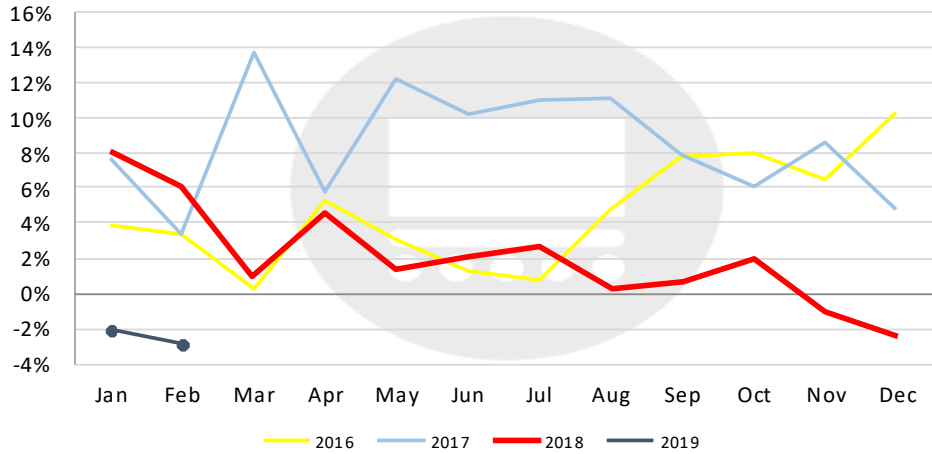
EU/NON-EU AIRPORTS PASSENGER TRAFFIC



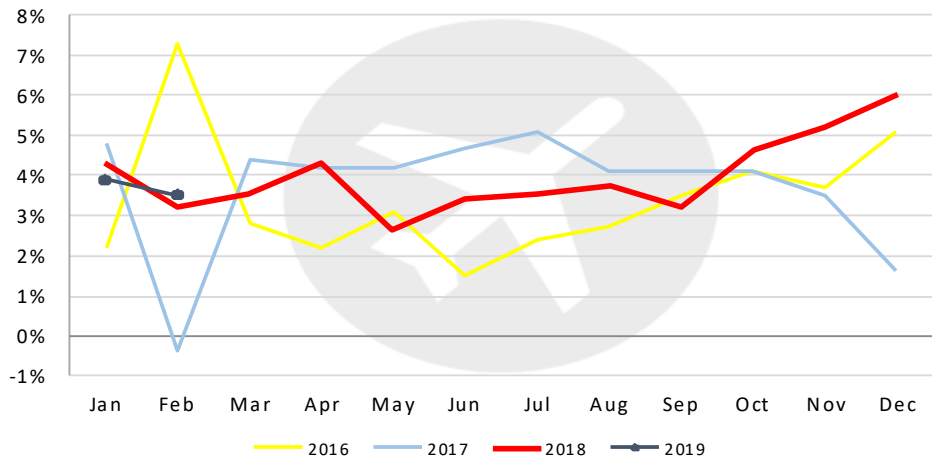
PERCENTAGE OF AIRPORTS WITH INCREASING PASSENGER TRAFFIC



TOTAL FREIGHT DEVELOPMENT



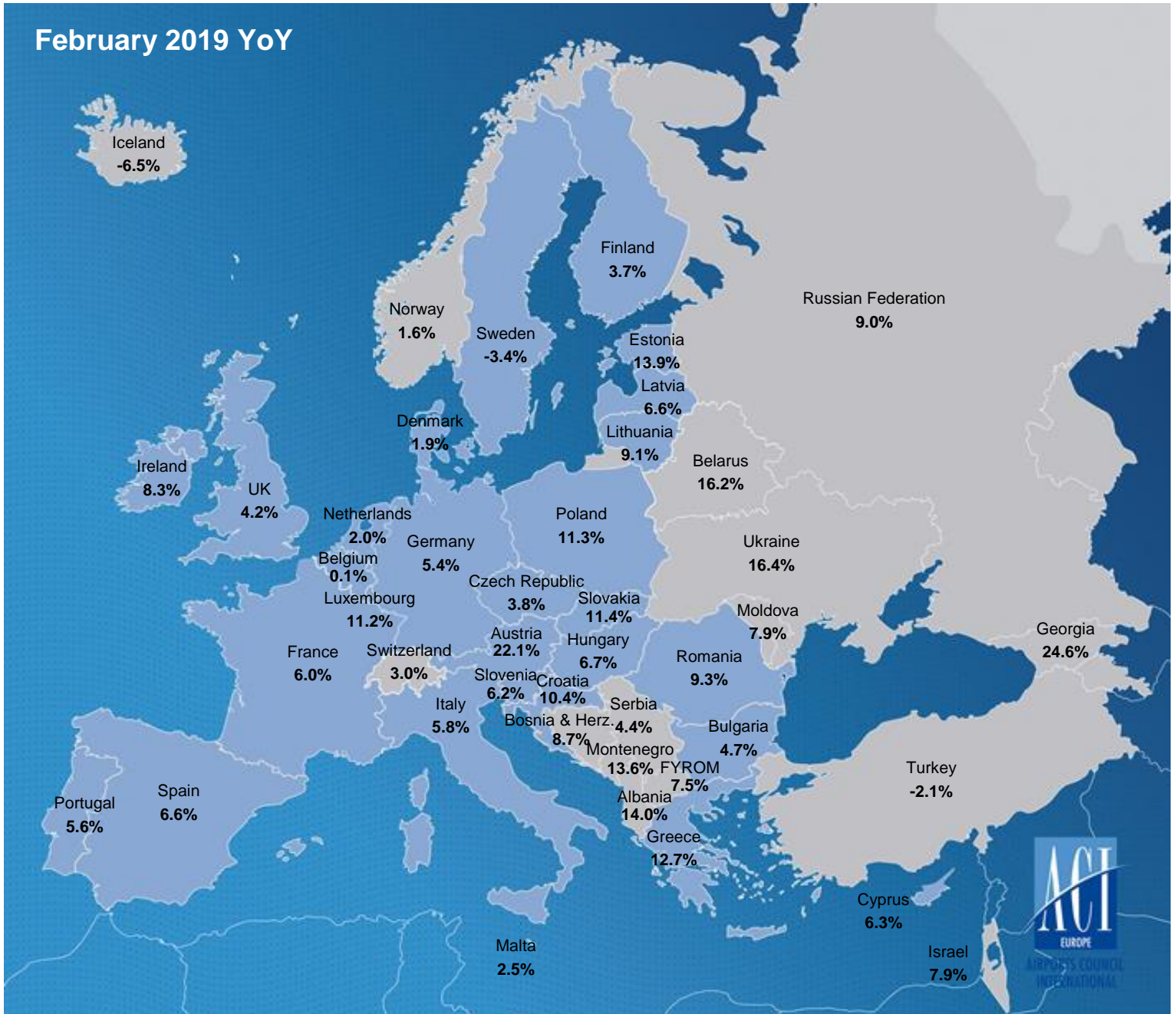
TOTAL MOVEMENTS DEVELOPMENT



TRAFFIC DEVELOPMENT (February 2019)

	February 2019/2018	February 2019/2017	February 2019/2016
Total Passengers	5.0%	11.6%	17.6%
EU airports	5.5%	10.9%	17.1%
Non-EU airports	3.3%	14.1%	19.4%
Passengers International	6.1%	13.3%	21.9%
EU airports	5.7%	12.0%	20.4%
Non-EU airports	7.6%	19.4%	29.1%
Passengers Domestic	2.0%	7.3%	7.4%
EU airports	4.6%	7.0%	6.9%
Non-EU airports	-1.9%	7.6%	8.3%
Freight	-3.3%	3.2%	6.9%
EU airports	-3.7%	0.4%	3.1%
Non-EU airports	-1.2%	20.4%	32.3%
Movements	3.5%	6.5%	6.0%
EU airports	3.9%	6.4%	6.2%
Non-EU airports	2.1%	6.8%	5.4%
PAX + Freight Combined	3.6%	6.9%	6.8%
Cargo only	-1.4%	-0.3%	-8.1%

PASSENGER DEVELOPMENT EUROPEAN COUNTRIES (February 2019 YoY)



PASSENGER TRAFFIC GROWTH BY TRAFFIC CATEGORY (February 2019)

GROUP 1		GROUP 2		GROUP 3		GROUP 4	
Over 25 million pax		Between 10 and 25 million pax		Between 5 and 10 million pax		Less than 5 million pax	
2019/2018	2019/2017	2019/2018	2019/2017	2019/2018	2019/2017	2019/2018	2019/2017
4.6%	10.8%	6.4%	13.2%	4.6%	13.1%	3.7%	10.1%

			PASSENGERS			COMMERCIAL MOVEMENTS		FREIGHT	
			February			February		February	
CITY		CODE	2019/18		2019/17	2019/18		2019/18	
1	London	LHR	5,482,288	1.6%	4.1%	35,131	0.0%	128,065	-3.8%
2	Paris	CDG	5,086,660	7.1%	10.0%	34,781	4.8%	142,143	-3.3%
3	Amsterdam	AMS	4,843,899	2.0%	11.7%	35,195	0.4%	115,797	-12.3%
4	Istanbul	IST	4,720,802	-0.8%	17.4%	32,118	-1.4%	94,964	2.3%
5	Frankfurt	FRA	4,554,060	4.3%	13.2%	35,980	4.7%	152,099	-2.8%
6	Madrid	MAD	4,148,152	5.9%	15.8%	29,068	4.7%	41,059	6.8%
7	Moscow	SVO	3,295,168	18.6%	30.0%	27,440	20.1%	15,610	22.3%
8	Barcelona	BCN	3,266,822	7.7%	16.7%	21,784	6.3%	12,357	4.7%
9	London	LGW	3,098,627	4.0%	4.7%	19,809	3.8%	8,610	5.2%
10	Munich	MUC	3,065,417	3.6%	3.9%	28,418	1.8%	25,218	-7.6%
11	Rome	FCO	2,716,016	5.6%	8.9%	21,284	8.8%	11,444	-4.5%
12	Istanbul	SAW	2,484,513	4.4%	20.6%	16,342	2.3%	4,414	-5.3%
13	Paris	ORY	2,212,412	1.1%	-1.7%	15,322	0.4%	6,500	-6.3%
14	Zürich	ZRH	2,030,516	3.4%	8.2%	18,465	2.8%	26,439	-5.7%
15	Dublin	DUB	2,008,781	8.6%	12.2%	15,257	7.4%	9,533	-11.4%
16	Oslo	OSL	1,994,151	1.9%	5.8%	18,111	0.4%	11,829	-8.9%
17	Copenhagen	CPH	1,990,872	1.9%	0.6%	18,354	0.4%		
18	Lisbon	LIS	1,893,066	2.2%	17.5%	14,558	0.9%	9,587	5.5%
19	London	STN	1,873,643	8.2%	13.4%				
20	Vienna	VIE	1,863,688	25.6%	33.8%	17,061	16.0%	14,481	-3.5%
21	Manchester	MAN	1,805,164	7.1%	8.1%	12,584	2.0%	7,762	3.8%
22	Stockholm	ARN	1,760,988	-2.6%	-0.6%	16,607	-1.4%	3,481	-56.4%
23	Milan	MLX	1,707,989	10.7%	26.1%	13,766	12.0%	37,905	-8.1%
24	Berlin	TXL	1,696,147	32.6%	21.8%	14,223	21.8%	1,497	-19.5%
25	Brussels	BRU	1,639,249	-0.4%	4.9%	14,373	-4.8%	35,786	-7.1%
26	Moscow	DME	1,600,017	-9.8%	-12.0%	13,055	-13.7%	7,851	-22.5%
27	Düsseldorf	DUS	1,557,928	12.0%	3.8%	15,098	9.2%	5,498	-8.6%
28	Helsinki	HEL	1,531,267	3.7%	16.0%	14,258	4.1%	13,461	10.5%
29	Geneva	GVA	1,457,101	0.0%	3.1%	12,122	1.5%	4,724	-1.6%
30	Tel-Aviv	TLV	1,412,241	8.9%	29.9%	9,312	5.1%	26,084	-0.8%
31	Moscow	VKO	1,346,307	10.7%	30.0%	9,858	0.6%	3,387	-34.7%
32	Athens	ATH	1,326,958	11.4%	18.0%	11,550	11.2%	6,863	16.9%
33	London	LTN	1,191,996	13.2%	12.4%	7,551	10.8%	3,063	83.7%

			PASSENGERS			COMMERCIAL MOVEMENTS		FREIGHT	
			February			February		February	
	CITY	CODE	2019/18		2019/17	2019/18		2019/18	
34	Warsaw	WAW	1,168,123	10.2%	24.4%	12,920	8.8%	6,654	6.2%
35	Gran Canaria	LPA	1,123,960	0.4%	7.1%	9,768	0.5%	1,287	-10.7%
36	Ankara	ESB	1,114,146	-18.5%	13.1%	7,475	-18.1%	645	-32.1%
37	Hamburg	HAM	1,095,961	0.9%	0.5%	9,807	3.6%	2,210	-13.3%
38	St Petersburg	LED	1,082,934	13.5%	20.7%	10,964	9.9%	1,770	-6.5%
39	Málaga	AGP	1,050,939	9.2%	15.2%	7,541	10.0%	179	0.0%
40	Prague	PRG	978,256	4.1%	18.0%	8,451	-0.1%	5,020	-5.3%
41	Budapest	BUD	970,574	6.7%	23.7%	7,383	4.9%	6,387	1.2%
42	Tenerife	TFS	952,315	3.2%	3.8%	5,713	5.8%	193	-1.5%
43	Edinburgh	EDI	939,413	11.0%	15.9%	8,514	6.5%	1,415	-6.7%
44	Bucharest	OTP	935,310	10.4%	15.5%	8,177	4.5%	2,851	-0.7%
45	Palma De Mallorca	PMI	896,002	14.6%	24.4%	7,413	11.4%	669	-3.3%
46	Milan	BGY	894,765	5.1%	11.5%	6,048	3.6%	9,020	-2.4%
47	Izmir	ADB	861,328	-7.9%	1.7%	5,435	-6.4%	2,672	4.1%
48	Berlin	SXF	841,804	-5.8%	-8.4%	6,314	-3.6%	891	18.8%
49	Antalya	AYT	818,210	15.6%	35.9%	5,314	11.2%	560	37.3%
50	Lyon	LYS	809,939	9.1%	18.8%	8,442	6.4%	4,483	3.9%
51	Porto	OPO	803,782	9.5%	21.0%	6,238	5.7%	2,636	-7.2%
52	Kiev	KBP	793,410	16.3%	32.0%	6,464	7.1%	2,742	-4.6%
53	Birmingham	BHX	791,677	3.5%	-2.1%	6,936	1.5%	2,173	-14.7%
54	Alicante	ALC	782,294	10.1%	13.9%	5,505	9.3%	269	-4.9%
55	Nice	NCE	774,867	7.2%	11.5%	8,244	-1.0%	622	-27.6%
56	Stuttgart	STR	684,952	2.8%	17.0%	7,549	5.6%	1,972	-22.8%
57	Cologne	CGN	682,909	-7.1%	-3.1%	8,570	0.5%	58,326	-5.8%
58	Toulouse	TLS	675,031	1.1%	3.6%	6,485	0.8%	5,737	7.5%
59	Venice	VCE	640,842	7.2%	13.5%	5,548	8.6%	3,708	3.3%
60	Milan	LIN	638,217	-4.7%	-6.5%	7,051	2.3%	793	-13.0%
61	Marseille	MRS	629,033	10.1%	11.1%	6,645	3.7%	4,509	4.6%
62	Bologna	BLQ	588,730	8.5%	22.0%	5,011	10.1%	3,190	2.3%
63	Naples	NAP	579,272	11.5%	57.7%	4,427	6.7%	584	4.8%
64	Lanzarote	ACE	551,928	0.9%	3.6%	4,397	1.1%	122	-6.9%
65	Basel	BSL	550,673	10.0%	15.2%	4,907	4.7%	4,876	-4.3%
66	Catania	CTA	539,870	2.7%	13.0%	4,240	8.5%	274	-7.1%
67	Glasgow	GLA	533,914	-5.7%	-11.6%	5,177	-5.8%	989	29.6%
68	Valencia	VLC	523,028	12.1%	43.7%	4,384	10.8%	1,057	3.1%
69	Sevilla	SVQ	521,987	20.4%	59.3%	3,729	18.4%	650	-33.9%
70	Krakow	KRK	518,280	14.8%	42.9%	3,777	12.2%	92	26.0%
71	Charleroi	CRL	512,545	1.2%	5.9%	3,165	1.3%	6	0.0%
72	Keflavik	KEF	508,183	-6.5%	4.4%	3,452	-5.2%	4,308	-1.1%
73	Sofia	SOF	497,999	5.2%	9.2%	3,784	4.0%	1,748	24.8%
74	Göteborg	GOT	442,772	-2.9%	-0.6%	4,690	-2.7%	1,339	12.2%
75	Bergen	BGO	436,040	4.8%	8.5%	6,258	7.8%	365	14.1%
76	Riga	RIX	431,156	6.6%	25.3%	5,331	2.8%	1,227	-33.8%
77	Fuerteventura	FUE	429,395	-8.1%	-2.1%	3,454	-8.2%	58	-18.3%
78	Bordeaux	BOD	423,754	10.5%	13.9%	4,043	7.4%	817	4.1%
79	Sochi	AER	417,611	12.5%	20.4%	1,692	26.1%	240	12.1%
80	Rome	CIA	412,554	-3.8%	-7.6%	2,524	-4.2%	1,322	1.8%
81	Eindhoven	EIN	397,966	1.9%	15.2%	2,400	-0.3%		
82	Nantes	NTE	397,123	19.2%	33.1%	3,861	5.9%	653	-4.9%

			PASSENGERS			COMMERCIAL MOVEMENTS		FREIGHT	
			February			February		February	
CITY		CODE	2019/18		2019/17	2019/18		2019/18	
83	Adana	ADA	396,827	-10.2%	-2.7%	2,494	-11.4%	216	-25.8%
84	Tenerife	TFN	391,766	9.3%	32.1%	5,161	9.1%	955	-12.1%
85	Palermo	PMO	378,600	11.1%	35.7%	2,951	11.4%	20	-28.6%
86	Thessaloniki	SKG	367,628	24.4%	2.8%				
87	Malta	MLA	360,772	2.5%	20.8%	2,855	7.1%	1,235	-0.6%
88	Bilbao	BIO	345,247	6.9%	16.8%	3,224	8.0%	74	0.0%
89	Turin	TRN	337,151	3.1%	0.6%	3,143	5.9%	25	-35.9%
90	Hanover	HAJ	322,030	1.4%	12.6%	3,464	1.6%	739	-7.3%
91	Bari	BRI	321,408	8.8%	15.3%	2,380	7.3%	15	-37.5%
92	Trondheim	TRD	320,407	0.5%	-1.1%	3,874	0.2%	160	1.3%
93	Belgrade	BEG	315,717	6.0%	11.6%	3,666	5.7%	1,204	-25.7%
94	Vilnius	VNO	313,855	5.0%	22.9%	3,118	1.7%	765	13.8%
95	Larnaca	LCA	308,007	-1.0%	10.0%	2,773	-6.6%	2,444	3.1%
96	Faro	FAO	306,590	16.6%	10.1%	2,236	16.9%	5	66.7%
97	Stavanger	SVG	300,189	0.3%	4.8%	4,717	6.1%	364	-1.1%
98	Newcastle	NCL	285,544	-1.7%	-0.8%	2,402	-5.5%	44	29.4%
99	Minsk	MSQ	283,253	16.2%	33.8%	3,606	13.8%	851	49.8%
100	Luxembourg	LUX	269,701	11.2%	29.1%	4,806	1.9%	57,912	-7.5%
101	Trabzon	TZX	246,084	-10.8%	-3.6%	1,513	-11.8%	44	33.3%
102	Treviso	TSF	243,538	3.4%	31.5%	1,481	4.3%		
103	Nürnberg	NUE	243,500	-2.3%	3.6%	2,957	-2.2%	512	-14.1%
104	Salzburg	SZG	241,974	9.7%	3.1%	2,051	7.7%	12	0.0%
105	Tbilisi	TBS	238,445	13.1%	57.2%	2,546	17.1%	1,911	47.3%
106	Cagliari	CAG	228,163	10.3%	23.1%	1,633	11.6%	175	-42.8%
107	Wroclaw	WRO	218,717	16.9%	25.0%	1,877	10.5%	19	-78.2%
108	Funchal	FNC	217,040	6.3%	5.4%	1,684	9.2%	283	44.4%
109	Billund	BLL	215,915	2.1%	14.6%	2,609	2.4%	5,621	1.0%
110	East Midlands	EMA	215,719	-1.1%	-7.6%	3,753	-0.4%	24,617	-0.6%
111	Rostov	ROV	207,011	6.7%	21.2%	1,769	5.3%	289	-8.3%
112	Tromsø	TOS	205,311	4.2%	11.8%	2,802	-4.1%	154	22.2%
113	Aberdeen	ABZ	201,256	-6.9%	-5.1%	5,802	-6.3%	463	8.9%
114	Tallinn	TLL	194,917	13.9%	30.4%	2,822	4.4%	605	-12.6%
115	Verona	VRN	190,258	9.0%	17.8%	1,656	8.9%	42	55.6%
116	Zagreb	ZAG	180,761	6.1%	17.1%	2,526	4.0%	502	-26.4%
117	Ibiza	IBZ	179,503	5.3%	26.3%	1,919	3.1%	90	-10.0%
118	Cluj	CLJ	177,633	2.2%	11.2%	1,573	0.1%	259	20.5%
119	Kazan	KZN	177,024	6.8%	41.3%	1,138	6.8%	123	-6.1%
120	Tirana	TIA	176,185	14.0%	25.5%	1,614	8.2%	129	0.0%
121	Stockholm	BMA	174,881	-7.4%	-9.9%	3,694	1.2%		
122	Chisinau	KIV	161,420	7.9%	16.9%	1,733	4.0%	211	12.2%
123	Florence	FLR	153,860	5.3%	6.8%	1,689	2.9%	6	50.0%
124	Cork	ORK	150,470	10.2%	13.9%	1,368	6.5%	2	-50.0%
125	Brindisi	BDS	143,697	3.6%	10.8%	1,026	9.1%		
126	Pristina	PRN	138,269	11.9%	27.7%	1,030	14.7%	55	-29.5%
127	Skopje	SKP	137,676	5.8%	30.6%	1,096	-2.5%	177	-6.8%
128	Malmö	MMX	136,745	-11.2%	-13.4%	1,619	-12.7%	1,751	0.9%
129	Bodo	BOO	129,653	0.6%	-2.1%	2,710	0.7%	100	20.5%
130	Stockholm	NYO	128,324	1.0%	18.2%	840	-0.7%	3	-25.0%
131	Bremen	BRE	128,185	-13.5%	-8.2%			41	-4.7%

			PASSENGERS			COMMERCIAL MOVEMENTS		FREIGHT	
			February			February		February	
	CITY	CODE	2019/18		2019/17	2019/18		2019/18	
132	Southampton	SOU	124,802	-7.6%	-11.2%	2,223	-13.6%	15	0.0%
133	Bratislava	BTS	119,406	11.4%	30.0%	1,036	0.2%	1,561	-23.6%
134	Lille	LIL	117,399	6.8%	17.5%	1,323	-6.8%	1	-75.0%
135	Hahn	HHN	114,933	-18.4%	-20.5%	1,196	-9.5%	11,757	13.7%
136	Paphos	PFO	111,532	33.4%	44.0%	800	35.4%	13	18.2%
137	Timisoara	TSR	108,635	-7.9%	-4.0%	1,212	-5.8%	406	-9.6%
138	Memmingerberg	FMM	107,914	20.5%	64.8%	678	19.4%		
139	Ljubljana	LJU	105,470	6.3%	17.2%				
140	Eilath	ETH	105,079	-3.9%	-6.7%	1,016	-10.1%		
141	Heraklion	HER	104,084	-0.9%	39.0%				
142	Jersey	JER	99,271	1.7%	7.9%	1,540	5.0%	93	1.1%
143	Ponta Delgada	PDL	99,183	7.6%	8.1%	1,115	11.7%	310	-7.5%
144	Luleå	LLA	91,523	2.4%	0.9%	839	-4.6%	1	-97.7%
145	Iasi	IAS	90,572	22.3%	22.8%	885	17.5%	1	0.0%
146	Shannon	SNN	90,189	-2.1%	0.8%	766	-4.6%	960	0.1%
147	Bodrum	BJV	88,694	-8.0%	9.4%	597	-5.1%	9	28.6%
148	Odessa	ODS	85,985	11.6%	32.7%	840	6.2%	43	-24.6%
149	Oulu	OUL	84,677	0.0%	5.1%				
150	Brest	BES	80,840	13.5%	16.2%	1,050	3.8%	310	5.8%
151	Aalesund	AES	79,204	2.1%	10.0%	940	-8.2%	77	-31.9%
152	Kaunas	KUN	76,927	22.7%	42.2%	673	20.6%	249	7.3%
153	Grenoble	GNB	75,786	-10.3%	-6.9%	1,027	6.9%		
154	Menorca	MAH	75,263	6.8%	11.1%	997	3.1%	67	-11.8%
155	Rovaniemi	RVN	74,808	8.4%	23.3%				
156	Strasbourg	SXB	74,725	7.6%	17.8%	1,286	-2.5%	4	100.0%
157	Kristiansand	KRS	74,445	3.3%	3.7%	1,179	9.6%	78	-71.4%
158	Umeå	UME	72,075	-9.3%	-8.1%	961	-15.9%	3	-90.0%
159	Kharkiv	HRK	65,913	23.5%	64.7%	516	6.2%	22	69.2%
160	Pau	PUF	65,114	43.8%	39.7%	885	21.6%	55	129.2%
161	Graz	GRZ	63,141	3.3%	1.6%	974	-2.5%	13	-23.5%
162	Isle Of Man	IOM	61,630	4.6%	2.6%	1,492	-5.7%	7	-36.4%
163	Bastia	BIA	55,689	11.2%	6.9%			455	394.6%
164	Podgorica	TGD	55,002	17.7%	17.7%	343	10.3%	37	-2.6%
165	Chambery	CMF	53,475	0.8%	15.7%	1,417	-3.5%		
166	Sarajevo	SJJ	53,130	8.5%	29.2%	668	-2.9%	124	-3.9%
167	Ostersund	OSD	52,914	-10.8%	0.3%	714	3.2%	1	-88.9%
168	Harstad	EVE	51,501	-4.0%	2.3%	664	-1.0%	32	0.0%
169	Ajaccio	AJA	51,112	0.8%	-0.1%			405	2.3%
170	Varna	VAR	51,015	-0.4%	74.3%	413	-11.0%	12	71.4%
171	Olbia	OLB	50,199	2.9%	16.8%	424	-1.9%	6	-25.0%
172	Chania	CHQ	47,656	19.7%	-27.1%				
173	Kutaisi	KUT	47,573	111.3%	141.9%	315	92.1%		
174	Trieste	TRS	47,396	-2.6%	0.0%	629	5.9%	37	640.0%
175	Rhodes	RHO	46,307	-13.2%	-10.8%				
176	Sibiu	SBZ	43,843	32.9%	33.7%	490	21.6%		
177	Haugesund	HAU	43,312	-1.7%	-2.5%	406	1.0%	11	-21.4%
178	Santorini Thira	JTR	38,308	25.8%	27.9%				
179	Muenster	FMO	37,486	-10.3%	3.7%	594	-4.8%	12	50.0%
180	Split	SPU	34,587	13.6%	45.9%	499	7.1%	10	-28.6%

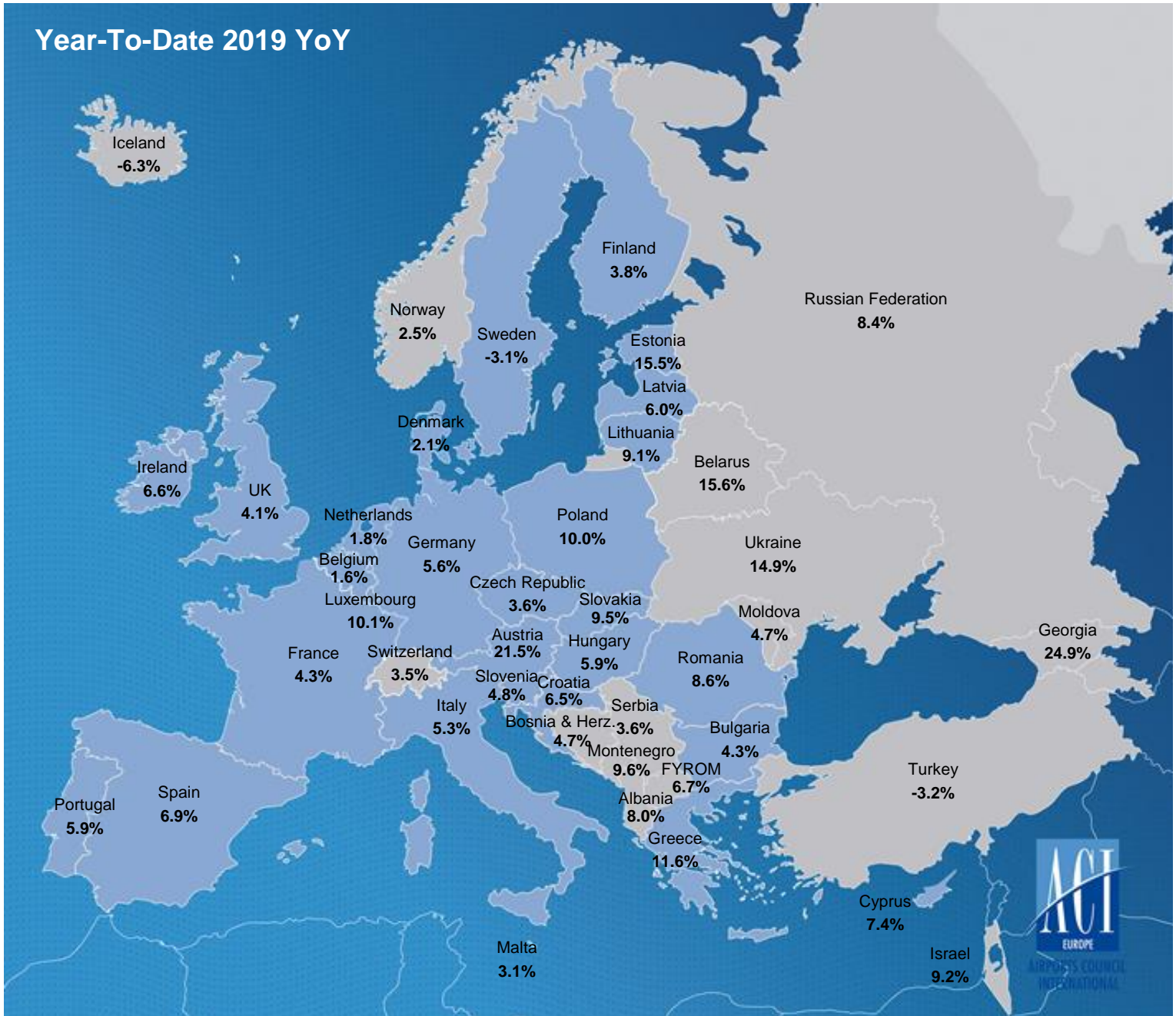
			PASSENGERS			COMMERCIAL MOVEMENTS		FREIGHT	
			February			February		February	
CITY		CODE	2019/18		2019/17	2019/18		2019/18	
181	Bournemouth	BOH	34,274	7.3%	1.3%	238	19.0%		
182	Dubrovnik	DBV	33,765	40.3%	48.0%	378	20.4%	7	-22.2%
183	Girona	GRO	33,632	-16.6%	-11.9%	228	-16.5%	5	-44.4%
184	Toulon	TLN	32,355	36.7%	26.0%	492	49.1%		
185	Trapani	TPS	31,692	-19.6%	-58.3%	359	-5.5%		
186	Craiova	CRA	31,368	2.4%	66.5%	198	-3.4%		
187	Molde	MOL	30,217	-11.2%	-15.1%	428	-13.0%	20	-4.8%
188	Friedrichshafen	FDH	29,580	2.8%	6.5%	590	34.1%		
189	Turku	TKU	28,845	-1.2%	21.8%				
190	Angelholm	AGH	28,596	-5.6%	-7.8%	537	13.5%		
191	Clermont-Ferrand	CFE	28,306	4.0%	10.5%	608	-6.6%	187	5.6%
192	Kiruna	KRN	28,164	-0.6%	-7.1%	273	1.9%	1	-98.0%
193	Alta	ALF	27,488	0.3%	3.2%	505	2.9%	62	44.2%
194	Visby	VBY	25,272	3.2%	-2.9%	584	-3.2%	1	-93.3%
195	Lublin	LUZ	24,662	-29.7%	8.2%	192	-28.1%		
196	Kirkenes	KKN	24,418	8.6%	2.3%	442	2.3%	29	16.0%
197	Newquay	NQY	24,307	18.3%	31.3%	329	-3.5%		
198	Nis	INI	23,651	-13.5%	7.6%	158	-14.1%	9	-92.4%
199	Kristiansund	KSU	22,429	-5.2%	14.0%	689	-8.7%	5	-54.5%
200	Bacau	BCM	22,128	-13.1%	-19.3%	223	-5.1%	1	0.0%
201	Mytilene	MJT	21,959	15.3%	5.7%				
202	Palanga	PLQ	21,154	32.5%	31.9%	256	21.3%		
203	Linz	LNZ	20,993	-16.0%	-13.5%	318	-30.6%	615	-8.6%
204	Vaasa	VAA	20,850	-12.4%	-5.8%				
205	Tampere	TMP	19,901	34.7%	44.2%				
206	Corfou	CFU	19,884	9.0%	43.5%				
207	Ostend	OST	18,086	17.6%	26.4%	194	-5.4%	1,564	-11.0%
208	Caen	CFR	17,187	64.4%	105.3%	438	21.0%		
209	Kos	KGS	16,945	22.6%	66.3%				
210	Tivat	TIV	16,900	2.2%	18.2%	110	-4.3%	1	0.0%
211	Bardufoss	BDU	16,566	-5.0%	-3.3%	143	-16.9%	12	100.0%
212	Klagenfurt	KLU	16,348	3.2%	7.5%	236	1.7%		
213	Ronneby	RNB	15,596	-9.6%	-17.9%	327	2.8%		
214	Batumi	BUS	14,278	87.3%	144.1%	348	55.4%		
215	Targu Mures	TGM	12,683	14.4%	23830.2%	120	N/A		
216	Brno	BRQ	12,581	36.5%	-6.5%	200	5.8%	316	23.0%
217	Svalbard	LYR	12,486	-4.4%	11.0%	181	0.6%	28	-17.6%
218	Hammerfest	HFT	11,942	9.4%	-11.5%	679	3.5%	15	66.7%
219	Floro	FRO	11,438	2.5%	11.6%	616	1.3%	4	-63.6%
220	Bourgas	BOJ	10,565	7.8%	26.6%	68	-10.5%	453	-39.8%
221	Leknes	LKN	9,815	-9.3%	10.8%	367	-15.2%	8	166.7%
222	Ostrava	OSR	9,184	-17.0%	-17.8%	159	-52.0%	2	-96.9%
223	Orsta	HOV	8,742	1.6%	1.4%	350	0.0%	2	-50.0%
224	Bronnoysund	BNN	8,528	-11.6%	-12.7%	411	-12.9%	3	-40.0%
225	Stokmarknes	SKN	8,178	-13.4%	-10.1%	346	-24.3%	8	100.0%
226	Calvi	CLY	8,096	15.9%	13.2%			1	0.0%
227	Vadso	VDS	7,948	-3.4%	-4.1%	478	-1.2%		
228	Mo i Rana	MQN	7,857	-6.8%	-19.0%	328	-13.2%	16	23.1%
229	Ohrid	OHD	7,146	53.0%	41.0%	50	66.7%		

			PASSENGERS			COMMERCIAL MOVEMENTS		FREIGHT	
			February			February		February	
CITY		CODE	2019/18		2019/17	2019/18		2019/18	
230	Mikonos	JMK	6,869	24.3%	-46.1%				
231	Pardubice	PED	6,517	-31.8%	-17.8%	46	-20.7%	37	362.5%
232	Sogndal	SOG	6,253	-3.9%	-7.4%	374	-5.6%		
233	Forde	FDE	6,236	-4.5%	-6.9%	284	-8.4%		
234	Liège	LGG	6,136	-0.3%	-2.2%	2,230	-0.5%	66,197	9.3%
235	La Rochelle	LRH	5,812	38.2%	38.1%				
236	Biarritz	BIQ	5,695	-90.5%	-91.2%	58	-90.6%		
237	Sandnessjoen	SSJ	5,178	-2.7%	-34.5%	256	0.8%		
238	Mosjoen	MJF	4,604	-17.2%	-32.6%	229	-16.7%		
239	Kefallinia	EFL	3,036	54.7%	79.3%				
240	Zakynthos Island	ZTH	2,864	7.8%	2.3%				
241	Monaco	MCM	2,649	-11.0%	3.9%	1,239	0.3%		
242	Bucharest	BBU	1,673	66.3%	25.2%	209	46.2%		
243	Saint-Nazaire	SNR	1,630	-21.1%	-19.5%	141	1.4%	1,585	6.7%
244	Zadar	ZAD	1,363	-31.9%	43.3%	92	-8.0%		
245	Mostar	OMO	294	71.9%	151.3%	20	900.0%		
246	Maribor	MBX	150	-39.0%	248.8%	6	-78.6%		
247	Foggia	FOG	24	-4.0%	-22.6%				
248	Taranto	TAR	9	-50.0%	8.9%	20	0.0%	610	7.8%

TRAFFIC DEVELOPMENT (Year-To-Date February 2019)

	YTD 2019/2018	YTD 2019/2017	YTD 2019/2016
Total Passengers	4.7%	11.8%	20.1%
EU airports	5.3%	10.7%	19.3%
Non-EU airports	2.9%	15.6%	22.5%
Passengers International	6.0%	13.1%	23.5%
EU airports	5.7%	11.8%	22.1%
Non-EU airports	7.3%	19.5%	30.2%
Passengers Domestic	1.3%	8.5%	11.4%
EU airports	3.8%	7.0%	10.1%
Non-EU airports	-2.3%	10.9%	13.5%
Freight	-2.7%	4.6%	10.6%
EU airports	-3.3%	1.7%	6.6%
Non-EU airports	0.3%	22.5%	38.0%
Movements	3.7%	6.6%	9.7%
EU airports	4.1%	6.0%	9.8%
Non-EU airports	2.5%	8.6%	9.6%
PAX + Freight Combined	3.9%	7.0%	10.3%
Cargo only	-1.7%	1.3%	-1.3%

PASSENGER DEVELOPMENT EUROPEAN COUNTRIES (Year-To-Date 2019 YoY)



PASSENGER TRAFFIC GROWTH BY TRAFFIC CATEGORY (Year-To-Date 2019)

GROUP 1		GROUP 2		GROUP 3		GROUP 4	
Over 25 million pax		Between 10 and 25 million pax		Between 5 and 10 million pax		Less than 5 million pax	
2019/2018	2019/2017	2019/2018	2019/2017	2019/2018	2019/2017	2019/2018	2019/2017
4.3%	10.9%	6.2%	13.6%	4.4%	13.6%	3.5%	11.5%

			PASSENGERS			COMMERCIAL MOVEMENTS		FREIGHT	
			YTD February 2019			YTD February 2019		YTD February 2019	
CITY		CODE	2019/18		2019/17	2019/18		2019/18	
1	London	LHR	11,411,263	1.9%	3.6%	72,844	-0.5%	258,757	-2.8%
2	Paris	CDG	10,455,430	4.9%	8.9%	72,371	3.7%	291,143	-3.0%
3	Amsterdam	AMS	9,849,004	1.9%	10.6%	72,380	0.3%	238,440	-10.1%
4	Istanbul	IST	9,842,402	-1.8%	22.2%	67,571	-1.1%	190,893	5.2%
5	Frankfurt	FRA	9,206,012	3.3%	11.6%	72,794	3.4%	306,401	-2.6%
6	Madrid	MAD	8,533,224	6.1%	14.9%	60,858	4.8%	80,783	5.9%
7	Moscow	SVO	6,885,056	18.0%	31.1%	58,358	20.2%	29,565	2.7%
8	Barcelona	BCN	6,540,502	7.4%	16.8%	45,066	6.8%	25,335	5.3%
9	Munich	MUC	6,159,220	4.3%	4.9%	58,285	2.5%	50,405	-8.2%
10	London	LGW	6,051,855	3.9%	5.1%	39,512	3.8%	17,050	6.5%
11	Rome	FCO	5,473,818	5.1%	6.0%	44,090	7.3%	22,258	-6.6%
12	Istanbul	SAW	5,246,289	3.5%	24.7%	34,790	3.8%	8,891	-1.2%
13	Paris	ORY	4,588,111	0.3%	0.9%	32,442	-0.5%	13,435	-0.7%
14	Zürich	ZRH	4,159,064	4.7%	8.5%	38,795	3.2%	52,208	-6.2%
15	Dublin	DUB	4,083,329	6.8%	11.9%	31,682	5.6%	19,653	-12.6%
16	Copenhagen	CPH	3,957,011	2.1%	0.1%	37,222	1.4%		
17	Oslo	OSL	3,932,831	2.7%	6.1%	37,009	1.9%	26,395	0.9%
18	Lisbon	LIS	3,871,899	2.7%	18.2%	30,636	1.2%	19,705	8.3%
19	London	STN	3,803,709	7.7%	11.9%	13,935	6.0%	17,445	-8.0%
20	Vienna	VIE	3,694,611	25.0%	30.2%	35,058	15.7%	29,786	-3.2%
21	Manchester	MAN	3,591,196	7.0%	7.2%	25,732	1.7%	15,711	1.9%
22	Stockholm	ARN	3,564,336	-2.5%	-0.2%	34,211	-0.7%	7,067	-56.5%
23	Milan	MLX	3,464,286	10.1%	23.6%	28,266	11.1%	76,973	-11.3%
24	Moscow	DME	3,453,659	-10.1%	-11.6%	28,212	-13.5%	15,124	-17.9%
25	Brussels	BRU	3,299,847	1.1%	6.7%	30,335	-1.6%	75,727	-6.0%
26	Berlin	TXL	3,298,388	37.2%	19.1%	28,731	26.7%	3,069	-18.7%
27	Düsseldorf	DUS	3,197,960	13.8%	4.2%	31,076	12.1%	10,293	-16.5%
28	Helsinki	HEL	3,094,286	4.0%	16.1%	29,621	4.5%	27,938	13.7%
29	Geneva	GVA	2,910,693	-0.1%	2.9%	24,787	1.2%	9,502	-0.3%
30	Tel-Aviv	TLV	2,900,720	9.8%	28.2%	19,712	6.9%	53,241	0.8%
31	Moscow	VKO	2,858,622	11.2%	164.7%	21,179	3.1%	6,218	-29.9%
32	Athens	ATH	2,719,027	9.9%	16.7%	24,468	10.5%	13,186	9.2%
33	Warsaw	WAW	2,361,041	8.3%	24.2%	27,023	9.0%	13,270	3.6%

			PASSENGERS			COMMERCIAL MOVEMENTS		FREIGHT	
			YTD February2019			YTD February2019		YTD February2019	
CITY		CODE	2019/18		2019/17	2019/18		2019/18	
34	London	LTN	2,348,355	12.5%	14.2%	15,468	10.3%	5,907	74.2%
35	Ankara	ESB	2,326,720	-20.5%	14.3%	15,605	-18.5%	1,270	-32.2%
36	St Petersburg	LED	2,313,084	13.8%	20.7%	23,284	9.8%	3,480	-5.6%
37	Gran Canaria	LPA	2,303,995	0.2%	6.8%	20,608	1.2%	2,788	-8.5%
38	Hamburg	HAM	2,167,880	-0.6%	-0.4%	20,114	3.8%	4,386	-18.2%
39	Málaga	AGP	2,063,358	8.9%	16.0%	15,485	11.4%	346	-1.7%
40	Budapest	BUD	1,976,166	5.9%	23.1%	15,354	4.4%	13,259	-0.1%
41	Tenerife	TFS	1,970,352	4.3%	4.9%	12,157	8.7%	441	4.8%
42	Prague	PRG	1,956,548	4.5%	16.9%	17,639	0.4%	10,736	-3.9%
43	Bucharest	OTP	1,930,692	10.0%	16.5%	17,259	5.3%	5,634	-2.0%
44	Edinburgh	EDI	1,859,887	10.4%	16.9%	17,254	5.1%	2,995	-1.7%
45	Milan	BGY	1,850,114	3.7%	11.0%	12,820	2.9%	18,925	-3.1%
46	Izmir	ADB	1,832,960	-8.5%	5.4%	11,539	-6.1%	5,563	50.8%
47	Palma De Mallorca	PMI	1,735,042	16.7%	27.3%	15,315	16.0%	1,333	-3.8%
48	Antalya	AYT	1,731,526	14.6%	36.1%	11,504	15.4%	1,025	24.5%
49	Kiev	KBP	1,690,605	14.9%	29.0%	13,819	8.0%	5,652	-1.5%
50	Berlin	SXF	1,658,529	-6.5%	-8.4%	12,765	-4.0%	1,847	21.4%
51	Porto	OPO	1,637,095	9.6%	20.6%	13,192	6.2%	5,443	-5.4%
52	Lyon	LYS	1,603,030	8.9%	17.5%	16,969	5.8%	9,336	5.5%
53	Birmingham	BHX	1,573,296	4.1%	-0.7%	14,098	1.2%	4,640	-11.6%
54	Alicante	ALC	1,566,600	10.6%	14.3%	11,357	10.6%	581	-7.5%
55	Nice	NCE	1,535,220	5.5%	14.3%	16,852	-1.2%	1,285	-28.7%
56	Cologne	CGN	1,389,128	-7.1%	-4.2%	17,658	0.5%	124,625	-5.1%
57	Stuttgart	STR	1,361,734	4.8%	15.4%	15,218	7.8%	4,421	-9.9%
58	Toulouse	TLS	1,348,743	0.1%	5.6%	13,235	-1.4%	12,159	5.0%
59	Milan	LIN	1,276,675	-4.6%	-8.3%	14,819	1.7%	1,477	-19.9%
60	Marseille	MRS	1,267,372	7.8%	11.0%	13,724	3.4%	9,391	5.6%
61	Venice	VCE	1,255,782	7.9%	14.3%	11,140	9.2%	7,614	4.5%
62	Bologna	BLQ	1,229,889	7.8%	20.4%	10,379	8.3%	6,498	-0.8%
63	Naples	NAP	1,152,628	9.6%	60.7%	9,007	4.3%	1,280	1.0%
64	Lanzarote	ACE	1,121,178	1.4%	4.9%	9,264	2.7%	250	-9.1%
65	Catania	CTA	1,118,833	3.6%	13.4%	9,063	9.4%	583	-8.6%
66	Charleroi	CRL	1,067,567	2.9%	8.9%	6,872	3.5%	14	-6.7%
67	Valencia	VLC	1,065,008	13.9%	45.8%	9,197	12.7%	2,417	1.4%
68	Glasgow	GLA	1,060,796	-7.5%	-11.7%	10,575	-8.3%	2,164	8.0%
69	Basel	BSL	1,053,675	9.3%	17.5%	9,785	3.9%	9,919	-1.7%
70	Sevilla	SVQ	1,044,161	21.7%	61.1%	7,773	20.1%	1,423	-34.8%
71	Keflavik	KEF	1,043,393	-6.3%	6.4%	7,360	-2.8%	9,025	-4.5%
72	Krakow	KRK	1,028,901	15.3%	41.0%	7,809	13.3%	177	18.8%
73	Sofia	SOF	1,025,469	5.4%	10.8%	8,007	4.1%	3,217	11.5%
74	Riga	RIX	898,617	6.0%	25.9%	11,372	3.4%	2,452	-29.8%
75	Göteborg	GOT	897,329	-2.1%	0.3%	9,650	-2.0%	2,953	-5.8%
76	Fuerteventura	FUE	872,298	-7.5%	-2.3%	7,356	-6.4%	130	-11.6%
77	Bergen	BGO	871,166	5.2%	9.2%	12,789	7.0%	759	13.5%
78	Rome	CIA	870,646	-2.5%	-4.4%	5,433	-2.9%	2,858	3.3%
79	Adana	ADA	848,358	-10.4%	-0.4%	5,321	-10.2%	440	-32.7%
80	Bordeaux	BOD	846,097	9.3%	12.9%	8,326	7.2%	1,718	-1.3%
81	Sochi	AER	831,892	9.8%	23.8%	3,273	16.4%	386	9.7%
82	Eindhoven	EIN	795,932	0.9%	15.0%	4,951	-1.1%		

			PASSENGERS			COMMERCIAL MOVEMENTS		FREIGHT	
			YTD February2019			YTD February2019		YTD February2019	
CITY		CODE	2019/18		2019/17	2019/18		2019/18	
83	Tenerife	TFN	792,003	8.0%	29.8%	10,807	8.7%	2,109	1.5%
84	Nantes	NTE	778,318	15.7%	31.8%	7,862	5.8%	1,351	-2.9%
85	Palermo	PMO	777,301	8.7%	31.5%	6,154	8.2%	41	-24.1%
86	Thessaloniki	SKG	755,612	25.0%	4.5%				
87	Malta	MLA	727,725	3.1%	21.0%	6,067	7.4%	2,570	5.8%
88	Bilbao	BIO	678,558	9.0%	17.1%	6,539	10.3%	155	6.9%
89	Turin	TRN	676,095	4.7%	2.1%	6,503	6.5%	39	-37.1%
90	Belgrade	BEG	663,261	5.0%	8.2%	7,760	3.7%	2,200	-20.1%
91	Bari	BRI	657,299	7.5%	17.0%	5,017	7.2%	32	-23.8%
92	Vilnius	VNO	652,639	5.4%	21.9%	6,582	2.1%	1,577	11.7%
93	Hanover	HAJ	643,884	0.7%	9.8%	7,032	1.7%	1,556	-8.7%
94	Larnaca	LCA	636,292	0.7%	9.7%	5,816	-4.3%	4,732	3.6%
95	Trondheim	TRD	634,469	1.5%	0.0%	7,932	1.3%	337	4.7%
96	Stavanger	SVG	608,046	2.6%	6.5%	9,749	8.1%	768	6.8%
97	Minsk	MSQ	601,475	15.6%	146.7%	7,612	12.3%	1,427	1.9%
98	Faro	FAO	571,154	19.0%	14.9%	4,288	20.5%	14	100.0%
99	Newcastle	NCL	562,477	-2.2%	-1.0%	4,927	-5.8%	91	8.3%
100	Luxembourg	LUX	530,830	10.1%	28.2%	9,890	-0.1%	122,585	-9.6%
101	Trabzon	TZX	530,336	-11.0%	2.9%	3,226	-11.7%	140	5.3%
102	Treviso	TSF	502,894	3.9%	31.6%	3,124	4.2%		
103	Tbilisi	TBS	490,623	13.3%	55.8%	5,482	20.0%	3,411	34.8%
104	Nürnberg	NUE	484,054	-0.3%	7.8%	6,044	1.2%	1,023	-3.9%
105	Cagliari	CAG	483,555	10.4%	22.1%	3,577	12.2%	294	-30.0%
106	Salzburg	SZG	465,801	7.7%	3.3%	4,100	7.3%	22	-21.4%
107	Funchal	FNC	443,530	4.2%	5.9%	3,625	6.2%	644	56.7%
108	Wroclaw	WRO	441,603	14.5%	24.4%	3,904	10.2%	42	-83.4%
109	Rostov	ROV	437,471	3.4%	21.6%	3,743	2.6%	505	-21.9%
110	Billund	BLL	434,486	2.9%	15.1%	5,372	3.9%	11,238	-3.4%
111	East Midlands	EMA	431,664	0.0%	-4.7%	7,816	0.9%	52,343	0.6%
112	Aberdeen	ABZ	408,781	-6.3%	-2.5%	12,045	-7.0%	937	4.5%
113	Tromsoe	TOS	405,767	4.5%	11.6%	5,805	-4.6%	313	19.5%
114	Tallinn	TLL	400,202	15.5%	31.2%	5,965	7.3%	1,234	-13.3%
115	Tirana	TIA	398,298	8.0%	19.9%	3,542	2.4%	281	6.8%
116	Verona	VRN	396,941	8.3%	16.9%	3,504	6.1%	78	52.9%
117	Kazan	KZN	372,703	4.1%	45.0%	2,569	-0.7%	224	-19.7%
118	Zagreb	ZAG	371,623	2.8%	15.2%	5,315	3.7%	971	-24.2%
119	Cluj	CLJ	363,064	1.9%	9.5%	3,329	0.1%	532	19.3%
120	Chisinau	KIV	358,067	4.7%	14.9%	3,654	2.0%	380	7.3%
121	Ibiza	IBZ	351,675	5.1%	24.4%	3,991	4.9%	177	-9.2%
122	Stockholm	BMA	350,086	-6.4%	-6.4%	7,479	3.3%	12	-20.0%
123	Florence	FLR	325,571	2.7%	8.2%	3,546	1.1%	14	75.0%
124	Pristina	PRN	307,048	14.7%	32.9%	2,350	16.3%	120	-22.6%
125	Cork	ORK	299,406	9.4%	13.4%	2,826	6.5%	5	-37.5%
126	Skopje	SKP	289,968	5.2%	26.9%	2,340	-3.3%	352	-5.9%
127	Brindisi	BDS	283,704	1.2%	9.3%	2,083	5.1%		
128	Malmö	MMX	275,020	-11.8%	-12.3%	3,357	-10.6%	3,830	5.9%
129	Bremen	BRE	266,898	-9.4%	-3.7%			85	-14.1%
130	Stockholm	NYO	257,879	-0.1%	17.3%	1,790	-1.5%	18	-55.0%
131	Bodo	BOO	255,554	1.6%	-1.3%	5,567	-1.1%	199	13.7%

			PASSENGERS			COMMERCIAL MOVEMENTS		FREIGHT	
			YTD February2019			YTD February2019		YTD February2019	
CITY		CODE	2019/18		2019/17	2019/18		2019/18	
132	Southampton	SOU	245,675	-7.3%	-7.7%	4,530	-14.1%	31	3.3%
133	Bratislava	BTS	245,245	9.5%	28.7%	2,130	-2.2%	3,258	-19.9%
134	Hahn	HHN	240,675	-17.6%	-21.2%	2,487	-8.0%	23,359	13.2%
135	Memmingen	FMM	227,356	21.2%	61.8%	1,482	22.3%		
136	Lille	LIL	222,111	0.0%	14.8%	2,583	-14.4%	2	-60.0%
137	Eilath	ETH	218,601	1.8%	2.4%	2,172	-4.4%		
138	Paphos	PFO	214,289	33.8%	42.8%	1,569	36.2%	24	0.0%
139	Timisoara	TSR	212,573	-10.4%	-5.8%	2,464	-7.4%	818	-9.9%
140	Ljubljana	LJU	209,123	4.8%	16.6%	2,091	4.5%	842	-3.1%
141	Ponta Delgada	PDL	208,498	8.9%	12.2%	2,392	10.8%	685	-2.6%
142	Heraklion	HER	202,230	-1.0%	32.8%				
143	Jersey	JER	194,080	5.1%	8.7%	3,118	1.3%	187	-6.0%
144	Shannon	SNN	191,014	-2.4%	0.9%	1,635	-3.1%	2,022	0.8%
145	Iasi	IAS	185,940	18.1%	23.4%	1,832	10.6%		
146	Bodrum	BJV	185,149	-9.9%	13.0%	1,250	-4.9%	19	35.7%
147	Odessa	ODS	183,048	9.8%	30.2%	1,790	4.9%	106	-1.9%
148	Luleå	LLA	179,940	2.6%	1.4%	1,700	-1.0%	2	-97.7%
149	Oulu	OUL	169,167	0.9%	5.9%				
150	Brest	BES	161,016	10.0%	15.4%	2,150	2.2%	592	1.0%
151	Aalesund	AES	159,342	4.9%	12.9%	1,914	-6.4%	158	-32.5%
152	Kaunas	KUN	159,022	21.2%	41.3%	1,430	20.4%	502	6.6%
153	Strasbourg	SXB	154,613	2.7%	20.0%	2,720	-1.1%	11	266.7%
154	Rovaniemi	RVN	151,362	7.4%	22.2%				
155	Kristiansand	KRS	150,031	2.3%	4.0%	2,449	10.1%	167	-69.9%
156	Menorca	MAH	146,093	8.9%	14.1%	2,099	12.0%	182	20.5%
157	Umeå	UME	143,616	-7.6%	-7.6%	1,924	-15.5%	4	-93.4%
158	Grenoble	GNB	141,204	-10.4%	-13.3%	1,703	3.7%		
159	Kharkiv	HRK	137,757	21.9%	57.5%	1,122	8.7%	36	20.0%
160	Graz	GRZ	123,308	3.2%	2.2%	1,992	-0.5%	29	-6.5%
161	Isle Of Man	IOM	119,005	4.4%	4.3%	3,089	-0.3%	23	-20.7%
162	Podgorica	TGD	118,705	11.4%	21.7%	759	6.2%	83	7.8%
163	Bastia	BIA	112,944	7.9%	7.0%			970	470.6%
164	Pau	PUF	110,002	19.4%	18.7%	1,729	12.3%	127	53.0%
165	Varna	VAR	107,882	-2.9%	85.7%	884	-12.5%	19	72.7%
166	Ajaccio	AJA	107,607	-1.1%	1.4%			878	7.9%
167	Sarajevo	SJJ	106,615	3.4%	26.2%	1,404	-4.2%	236	-1.3%
168	Chambery	CMF	104,821	0.3%	13.4%	2,751	-1.1%		
169	Kutaisi	KUT	103,468	111.8%	127.5%	691	88.8%		
170	Olbia	OLB	101,909	2.1%	15.5%	872	-2.2%	17	0.0%
171	Harstad	EVE	101,457	0.0%	5.4%	1,397	2.6%	62	-4.6%
172	Chania	CHQ	98,557	18.7%	-25.9%				
173	Ostersund	OSD	98,357	-7.0%	1.4%	1,391	4.9%	2	-89.5%
174	Rhodes	RHO	97,298	-13.1%	-9.2%				
175	Trieste	TRS	92,744	-5.5%	-5.6%	1,248	3.6%	40	263.6%
176	Sibiu	SBZ	91,045	33.7%	38.8%	1,014	16.4%	2	-66.7%
177	Haugesund	HAU	85,079	-2.5%	-3.0%	835	0.8%	24	-20.0%
178	Muenster	FMO	83,686	4.5%	19.8%	1,297	7.4%	15	-21.1%
179	Santorini Thira	JTR	72,234	18.8%	24.4%				
180	Split	SPU	70,745	10.7%	31.3%	1,042	5.8%	22	-12.0%

			PASSENGERS			COMMERCIAL MOVEMENTS		FREIGHT	
			YTD February2019			YTD February2019		YTD February2019	
CITY		CODE	2019/18		2019/17	2019/18		2019/18	
181	Girona	GRO	70,639	-13.0%	-9.4%	488	-11.4%	29	190.0%
182	Bournemouth	BOH	70,143	10.2%	4.9%	488	18.7%		
183	Toulon	TLN	65,164	23.2%	22.8%	1,025	43.0%		
184	Trapani	TPS	64,435	-20.4%	-59.2%	762	-4.5%		
185	Biarritz	BIQ	63,792	-49.1%	-50.5%	662	-49.0%		
186	Craiova	CRA	63,754	-4.0%	60.2%	418	-10.3%		
187	Friedrichshafen	FDH	60,806	5.2%	14.5%	1,241	29.0%		
188	Dubrovnik	DBV	60,088	29.6%	42.6%	758	21.9%	15	-28.6%
189	Molde	MOL	58,480	-10.2%	-17.8%	853	-16.0%	42	0.0%
190	Clermont-Ferrand	CFE	58,008	-0.3%	12.4%	1,294	-4.0%	456	153.3%
191	Angelholm	AGH	56,944	-1.8%	-5.5%	1,106	15.0%		
192	Turku	TKU	55,292	-7.0%	15.6%				
193	Alta	ALF	53,208	0.5%	1.8%	1,036	2.3%	124	40.9%
194	Kiruna	KRN	51,220	-1.9%	-10.3%	549	4.4%	2	-96.0%
195	Bacau	BCM	49,703	-5.0%	-13.9%	489	2.5%		
196	Lublin	LUZ	49,603	-30.3%	4.7%	438	-24.6%		
197	Visby	VBY	49,269	0.0%	-2.1%	1,160	-2.0%	9	-70.0%
198	Nis	INI	48,872	-12.4%	14.5%	332	-16.2%	49	-59.5%
199	Newquay	NQY	47,723	17.0%	32.7%	702	-1.1%		
200	Kirkenes	KKN	46,732	5.2%	1.8%	947	3.4%	59	3.5%
201	Mytilene	MJT	45,321	15.8%	9.1%				
202	Kristiansund	KSU	44,496	-4.5%	10.7%	1,421	-9.3%	11	-50.0%
203	Palanga	PLQ	44,263	30.2%	29.2%	537	20.1%		
204	Vaasa	VAA	42,688	-9.5%	-2.5%				
205	Linz	LNZ	42,495	-11.9%	-7.0%	736	-20.0%	1,263	-5.5%
206	Corfou	CFU	40,411	7.3%	39.7%				
207	Tivat	TIV	37,980	4.4%	31.0%	254	-0.8%	4	-99.0%
208	Tampere	TMP	36,824	24.8%	40.1%				
209	Ostend	OST	36,578	19.7%	32.2%	519	20.1%	4,756	13.5%
210	Kos	KGS	34,644	11.5%	65.8%				
211	Klagenfurt	KLU	34,268	4.2%	15.7%	511	2.0%		
212	Bardufoss	BDU	34,224	1.0%	-1.0%	302	-19.7%	20	66.7%
213	Caen	CFR	33,315	57.3%	108.9%	838	25.1%		
214	Ronneby	RNB	30,839	-7.1%	-15.2%	632	2.9%		
215	Batumi	BUS	30,251	66.9%	178.8%	610	70.4%		
216	Hammerfest	HFT	24,030	4.9%	-9.5%	1,367	-3.0%	31	72.2%
217	Targu Mures	TGM	23,805	150.0%	30419.2%				
218	Brno	BRQ	23,599	21.0%	-17.9%	423	3.9%	574	9.8%
219	Floro	FRO	22,231	-3.8%	6.8%	1,243	-2.1%	8	-63.6%
220	Bourgas	BOJ	21,622	-5.4%	14.7%	167	0.6%	937	-41.7%
221	Svalbard	LYR	20,890	-0.7%	5.2%	340	0.9%	58	0.0%
222	Leknes	LKN	18,049	-12.6%	5.4%	763	-21.1%	14	100.0%
223	Bronnoysund	BNN	17,749	-5.5%	-10.2%	876	-7.0%	7	-12.5%
224	Ostrava	OSR	17,103	-19.6%	-25.6%	338	-48.1%	35	-81.3%
225	Orsta	HOV	16,899	-5.2%	-1.6%	701	-6.7%	5	-28.6%
226	Stokmarknes	SKN	16,673	-12.3%	-7.6%	736	-26.4%	16	60.0%
227	Vadso	VDS	16,335	-1.4%	-0.9%	1,002	-2.3%		
228	Calvi	CLY	16,119	14.1%	9.6%				
229	Mo i Rana	MQN	15,505	-8.1%	-18.1%	672	-14.8%	30	3.4%

			PASSENGERS			COMMERCIAL MOVEMENTS		FREIGHT	
			YTD February2019			YTD February2019		YTD February2019	
CITY		CODE	2019/18		2019/17	2019/18		2019/18	
230	Pardubice	PED	15,347	-46.3%	623.9%	103	-41.5%	38	322.2%
231	Ohrid	OHD	15,278	46.0%	60.9%	112	51.4%		
232	Liège	LGG	13,486	1.0%	7.9%	4,742	1.0%	140,158	11.7%
233	Mikonos	JMK	13,370	70.9%	-39.7%				
234	Forde	FDE	12,942	-4.1%	-2.1%	613	-5.7%		
235	Sogndal	SOG	12,602	-3.4%	-8.9%	772	-7.9%		
236	La Rochelle	LRH	11,139	28.2%	32.7%				
237	Sandnessjoen	SSJ	10,828	8.7%	-30.7%	543	10.4%		
238	Mosjoen	MJF	9,592	-14.7%	-24.3%	486	-17.3%		
239	Monaco	MCM	6,847	5.3%	36.6%	2,796	2.0%		
240	Kefallinia	EFL	6,062	59.4%	73.8%				
241	Zakynthos Island	ZTH	5,354	0.9%	-6.3%				
242	Zadar	ZAD	3,777	-2.5%	62.5%	214	0.9%		
243	Bucharest	BBU	3,769	56.3%	61.1%	440	54.4%		
244	Saint-Nazaire	SNR	3,513	-8.6%	-11.6%	292	0.0%	3,344	0.7%
245	Mostar	OMO	457	165.7%	287.3%	21	600.0%		
246	Taranto	TAR	48	152.6%	1100.0%	40	-28.6%	1,224	9.7%
247	Foggia	FOG	35	-61.5%	-16.7%				

DEFINITIONS

Passengers

Revenue and non-revenue passengers arriving or departing via commercial aircraft and helicopters on a scheduled or non-scheduled flight.

Domestic

Traffic (passengers and freight) performed between airports located within the same country or territory.

International

Traffic (passengers and freight) performed between the designated airport and an airport in another country or territory.

Freight

Freight is any property carried on an aircraft other than mail, stores and baggage.

Movements / Aircraft movement

A movement is a landing or take-off of an aircraft or helicopter at an airport operating a scheduled or non-scheduled service.

Cargo only

Movements by aircraft and helicopters operated for commercial transport operations involving freight and/or mail, but not passengers (excluding air taxi and business flights).

PAX + Freight combined

Movements by aircraft and helicopters operated for commercial transport operations involving passengers, freight and/or mail (excluding air taxi and business flights).

Geographical coverage

Europe

Refers to all the countries and territories in the continent of Europe.

EU

Refers to airports located in the 28 Member States of the European Union.

Non-EU

Refers to European countries that are not members of the European Union. These currently include Albania, Belarus, Bosnia and Herzegovina, Former Yugoslav Republic of Macedonia, Georgia, Iceland, Israel, Montenegro, Norway, Russian Federation, Serbia, Switzerland, Turkey and Ukraine.



Airports Council International has been tracking airport traffic data for over 25 years. As part of that, here in Europe ACI EUROPE has published a dedicated airport traffic report every month for over 10 years. The data available comprises the most comprehensive reporting of passenger traffic figures available (including the network, low cost, charter and other airlines) as well as freight figures and aircraft movements. The report also provides insights into the average traffic performance in the various countries in continental Europe and a breakdown of the average growth in our 4 traffic categories for airports).

ACI EUROPE is the European region of Airports Council International (ACI), the only worldwide professional association of airport operators. ACI EUROPE represents close to **500 airports** in 45 European countries. In 2015, our member airports handled over 90% of commercial air traffic in Europe, welcoming more than **1.9 billion passengers, 18.9 million tonnes of freight** and **22.8 million aircraft movements**. These airports contribute to the employment of **12.3 million people**, generating **€675 billion** each year (**4.1%**) of GDP in Europe.

EVERY FLIGHT BEGINS AT THE AIRPORT.

www.aci-europe.org

Twitter: @ACI_EUROPE

Produced by ACI EUROPE

© Copyright ACI EUROPE 2017